

A photograph showing a close-up of a service hanger installed in a tunnel. The hanger is a yellow, conical object attached to a metal rod, which is secured to a mesh wall. The tunnel walls are covered in a grey mesh with some reddish-brown spots.

# Re-usable service hangers

The quick solution for installing services

A decorative graphic at the bottom of the page consisting of a black wavy line above a grey wavy line.

# Business Snapshot

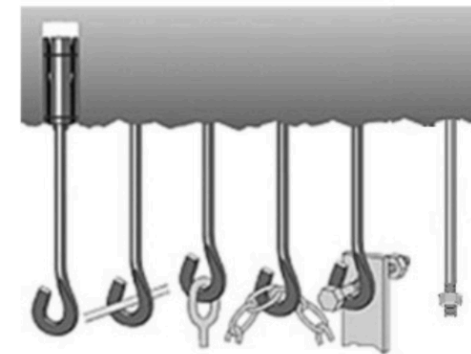
- Increasing focus by miners on Rapid Development.
- Increasing focus by miners on cost control.
- Continued focus by miners on safety.
- Production mining - continued need for support infrastructure expansion.
- Need to get services to the face as fast as possible.
- Less environmental impact - smaller footprints.



# Save Time & Reduce Costs

Immediate support for key services mobilisation and installation

- Mounting with seconds without requirement for added cements or grouts
- Re-usable where required
- Expandable mounting based on shell technology
- Corrosion protection through shell design
- Various Hole Diameters
- Approved up to 420kg weight capacity
- Designed for immediate support of services
- Move services from a trip hazard to a safer working place: i.e. on the wall or roof:
  - Electrical cables
  - Ventilation bags
  - Pneumatic hoses
  - Water lines



# Background

Originally developed for Scandinavian mines

- ✓ Development target:
- ✓ Fast insertion
- ✓ Immediate loading
- ✓ Load to 420 Kg
- ✓ Hand tightened
- ✓ Re-usable
- ✓ Corrosion protection at the shell (plastic)
- ✓ Series of solutions that can be extended



# Standard products

- ✓ Standard products
- ✓ Lengths can be changed
- ✓ Hooks can be changed to customer needs
- ✓ Expansion shell is plastic
- ✓ No corrosion
- ✓ Re-usable
- ✓ For immediate services support
- ✓ Drill rig hole (3 secs)
- ✓ Can be drilled hand held equipment (Hilti type)
- ✓ Can be delivered in galvanised form for highly aggressive conditions (e.g. salt mines)



Product	C16	C28	C32	C42
Length	268mm	325mm	343mm	343mm
Hole Diameter	16mm	28-31mm	32-38mm	43-48mm
Max weight	100kg	420kg	420kg	420kg

# Blasting hook

- ✓ As mines advance and ore grades diminish, a key consideration is the amount of steel scrap caught in the ore
- ✓ A simple alternative to steel hooks for gathering blasting cords to mines is the Blasting Hook
- ✓ Fast, flexible, reduces ore contamination



Blasting / Explosives cable hook  
Designed in plastic which has a high flexibility

# Corrosion of typical hanger systems

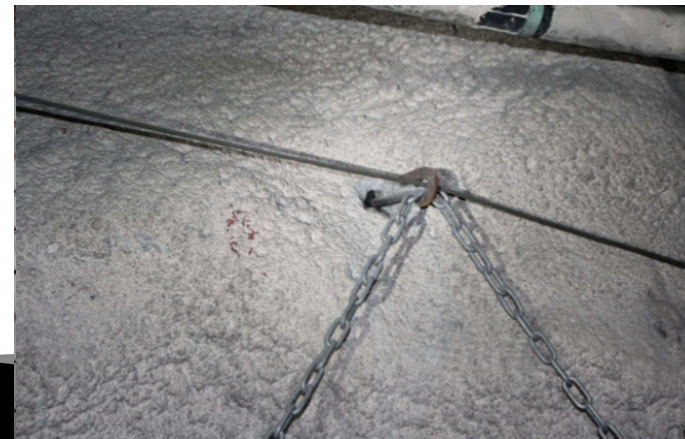
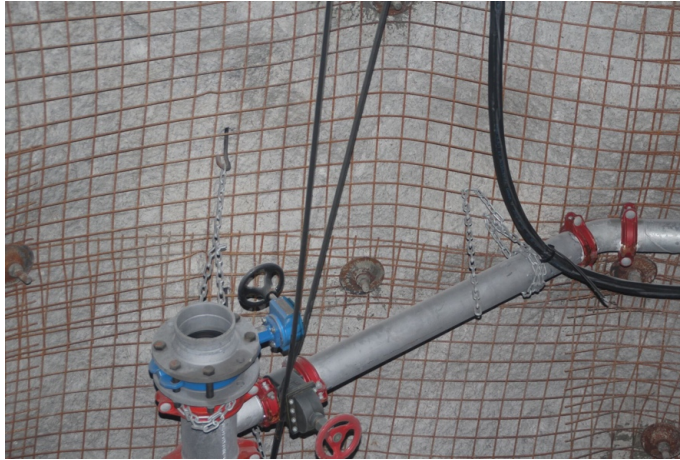


# Mounting and checking

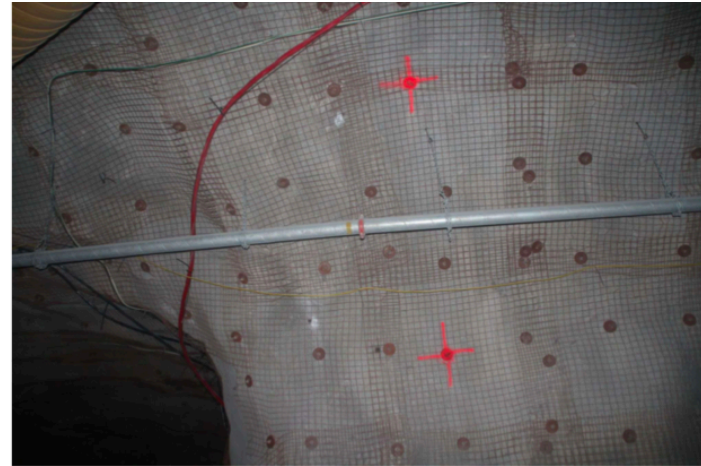
- Drill the hole.
- Inserts elected service hook.
- Screw until tight (max 8 Nm).
- Perform pull test to confirm expected weight based on rock formations (NB: Best suited for harder materials such as granites; where used in softer materials, the maximum holding load of the rock will determine maximum performance for the service hook).
- Do not over tighten.
- Do not apply loads beyond the recommended weight capacities.
- Hook and shell can take effective loads of up to 2tonnes. However, the approved maximum weight bearing capacity is between 400 and 420 kg in operation.
- Regularly perform pull tests to ensure rock remains intact.



# Hooks for services



# Hooks for services





# Thank you!

[www.nordicgeosupport.com](http://www.nordicgeosupport.com)

